

Background

Sentral servers provide a wide range of services to school networks.

A *Sentral* server provides a publishing space for both school Internet and Intranet sites. (Depending on your network setup, some configuration, such as setting up a reverse proxying or port forwarding, may be necessary to access the Internet site from outside the school network).

Web sites can be uploaded to both these spaces using File Transfer Protocol (FTP) software.

iWeb '09 includes an FTP publishing facility, so can easily publish web sites to a non-Apple server, such as *Sentral*.

Why would you want to publish your Intranet site to *Sentral*, rather than your *Mac OS X Server*?

Most schools use their *Mac OS X Server* to provide a number of services to their school network - DHCP, DNS, OD authentication, Home folder hosting, etc, as well as the school's Intranet site.

By hosting your school's Intranet site on your *Sentral* server you are freeing up the *Mac OS X Server* from serving web pages, so that it can more efficiently provide other core services to the school network. This is especially relevant if your school, like most other schools, hosts a comprehensive collection of school photos on your web server.

This document describes the process of setting up your *Sentral* server to host your school's Intranet and Internet sites, and configuring *iWeb* to publish both your Intranet and school Internet site (if required) to your *Sentral* server, using FTP.

This document only describes the configuration and publishing process. Another document in this series provides specific details about how to use *iWeb* to create a web site.

Other iWeb and Intranet Quickstarts are available at - intranet.wazmac.com

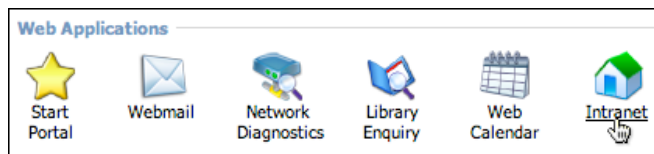
Sentral server is available from GP Technology Solutions - www.gptech.com.au

1. Server Preparation - Intranet

If you haven't used the Intranet service on your Sentral server before, there are a couple of things that you will need to activate....

1.1. Use a web browser to log on to the administration page of your *Sentral* server - *sentral-ip-address/admin*.

1.2. Click on the **Intranet** icon.

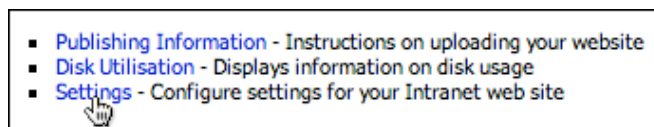


1.3. Click to enable the **Intranet** service.

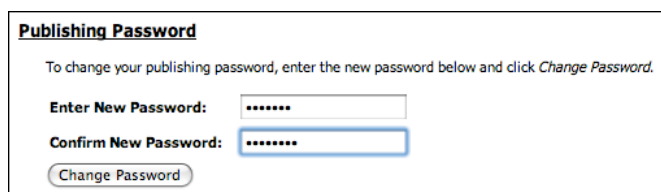


After clicking to enable the **Intranet** service, there may be a short delay while activation takes place.

1.4. Click on the **Settings** option.



1.5. Enter a new password for publishing to your Intranet.

A screenshot of a 'Publishing Password' form. It includes the text: 'To change your publishing password, enter the new password below and click *Change Password*.' Below this are two input fields: 'Enter New Password:' and 'Confirm New Password:', both containing masked characters (dots). A 'Change Password' button is at the bottom.

After clicking on the **Change Password** button there may be a short delay before you are notified that the password change is complete.

1.6. Log off from the Admin area of *Sentral*.

2. Publish your web site to Sentral from iWeb

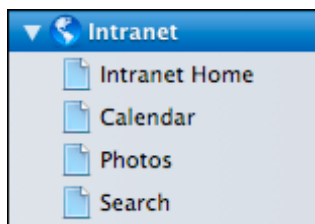
It is assumed that you have already created a web site in iWeb. If not, and you are not sure how to do this, there are some other QuickStarts in this series that provide more specific details about how to create a web site using this application.

These QuickStarts documents, and a template for a school intranet site are available for download at intranet.wazmac.com

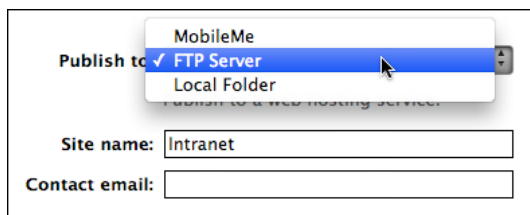
2.1. Open iWeb.



2.2. In the left pane of the iWeb window click on the name of your Intranet site.



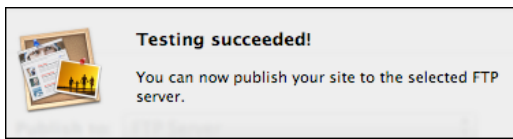
2.3. In the right pane of the iWeb window choose **FTP Server** from the pop-up menu in the **Publishing** section of the window.



2.4. In the **FTP Server Settings** section of the window, enter the **IP address** of your *Sentral* server, your **username** (the default username is *intranet*) and the **password** that you configured previously.

Server address:	<input type="text" value="192.168.1.21"/>
User name:	<input type="text" value="intranet"/>
Password:	<input type="password" value="....."/>
Directory/Path:	<input type="text"/>
Protocol:	<input type="text" value="FTP"/>
Port:	<input type="text" value="21"/>
<input type="button" value="Test Connection"/>	

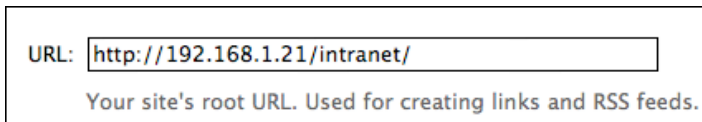
- 2.5. Click on the **Test Connection** button to confirm that you have the correct settings.



Click on the **OK** button to continue.

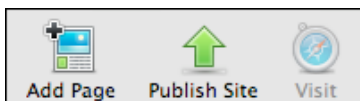
- 2.6. Under **Website URL**, enter the address of your intranet web site.

Your Intranet site will be published in a folder called **intranet** on the *Sentral* server - hence the address below....

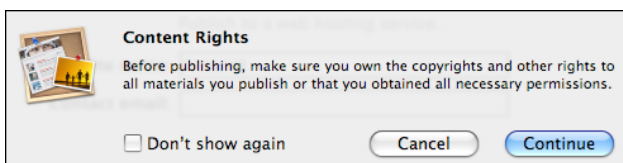


(Of course, replace 192.168.1.21 with the IP address of your *Sentral* server in the above procedures).

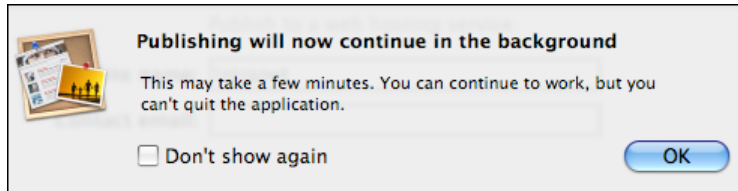
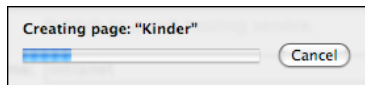
- 2.7. Click on the **Publish Site** icon at the bottom of the *iWeb* window.



- 2.8. Acknowledge the **Content Rights** window, then click on the **Continue** button.



2.9. You will be advised of the progress of the publishing operation.



2.10. You will be advised when the publishing operation is complete.

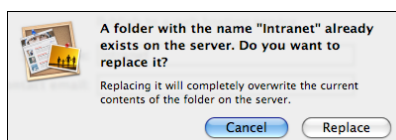


2.11. Click on the **OK** button to continue.

2.12. The first time you publish your site may take a short time to upload the files in the site, depending on the size of your site.

After modifying your site and re-publishing, you should find that only those files that have changed will be uploaded via the FTP process.

If you make some major changes to your site, or it's configuration, you may be notified that the site already exists, and asked to confirm the overwriting of the previous site's files. If so, click on the **Replace** button to continue.



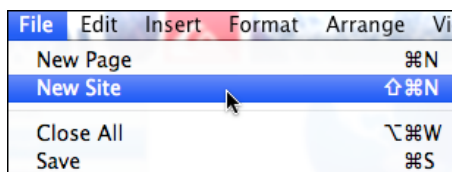
2.13. Once the publishing process is complete, use *Safari*, or another web browser, to go to <http://192.168.1.21/intranet/> (replacing 192.168.1.21 with the IP address of your *Sentral* server) to see your Intranet site.

3. Publishing an Internet site

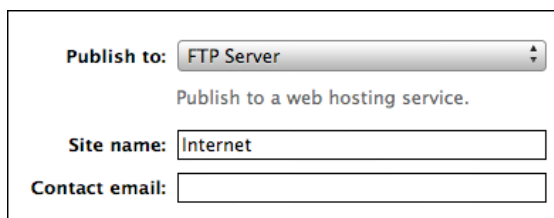
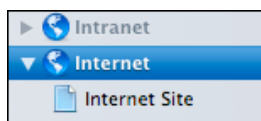
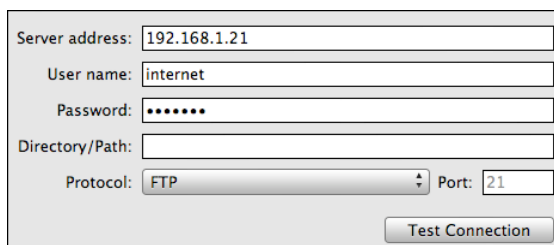
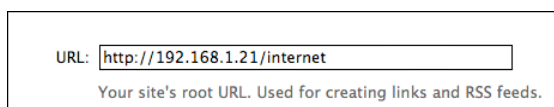
If you have provided external access to your *Sentral* server you may be able to host your school's Internet site here too.

The procedure for publishing an **Internet** site to a *Sentral* server is essentially the same as for publishing an **Intranet** site, except that you use a different username (*internet*) and a password that is setup for you via a *Sentral* helpdesk call.

- 3.1. You can create your school **Internet** site in *iWeb* while logged on as the same user that created the **Intranet** site - simply create a new site in *iWeb*.



- 3.2. Once you have added some content to the new **Internet** site, click on the name of that site to enter the appropriate FTP settings, similar to the process described above for the **Intranet** site.

A screenshot of the 'Publish to' dialog box in iWeb. It has three fields: 'Publish to:' with a dropdown menu set to 'FTP Server', 'Site name:' with a text box containing 'Internet', and 'Contact email:' with an empty text box. Below the 'Publish to:' dropdown is the text 'Publish to a web hosting service.'A screenshot of the FTP settings dialog box in iWeb. It has several fields: 'Server address:' with '192.168.1.21', 'User name:' with 'internet', 'Password:' with a masked field of seven dots, 'Directory/Path:' with an empty text box, 'Protocol:' with a dropdown menu set to 'FTP', and 'Port:' with '21'. There is a 'Test Connection' button at the bottom right.A screenshot of the URL field in iWeb. The text 'http://192.168.1.21/internet' is entered in the text box. Below the text box is the text 'Your site's root URL. Used for creating links and RSS feeds.'

- 3.3. Test the connection, then click on the **Publish Site** button, and you're done!