

About this Document

These notes describe the process of configuring a *Mac OS X 10.5* computer to correctly access a *Mac OS X 10.4 Server Open Directory*.

Do I need to do this?

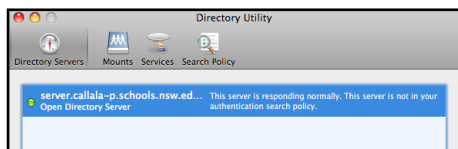
If your new 10.5 computers only recognise local users (ie Admin, Student, Other) then you will need to edit the Directory Utility, as described below, to ensure that the computer recognises the directory of users on your server.

1. Log on to the computer as the **Local Administrator**.
2. Launch *Directory Utility*.



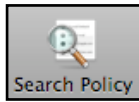
If *Directory Utility* is not displayed in the Dock, you can find *Directory Utility* in the **Applications > Utilities** folder.

3. Check the information displayed in the *Directory Utility* window.



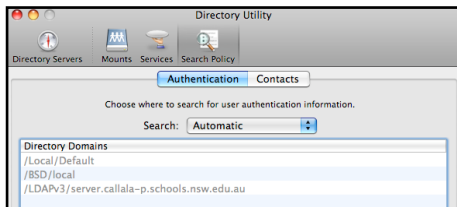
It is likely that you will be advised that **The server is responding normally. This server is not in your authentication search policy.**

4. Click on the **Search Policy** icon at the top of the *Directory Utility* window.

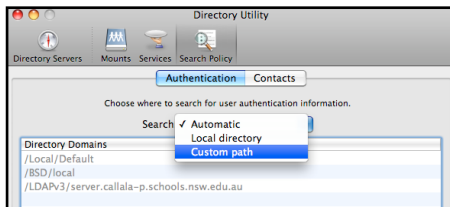


If the icon is not displayed, click on the button to **Show Advanced Settings**.

5. You will see that your server is in fact listed in the **Search Policy** window.



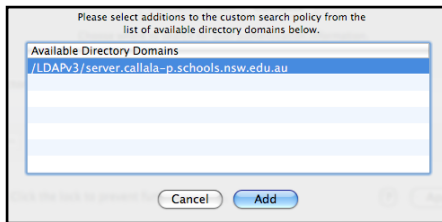
6. Click on the **Search** popup menu (displays **Automatic** by default) and choose **Custom Path**.



7. Click on the **+** button at the bottom of the **Custom Path** window.

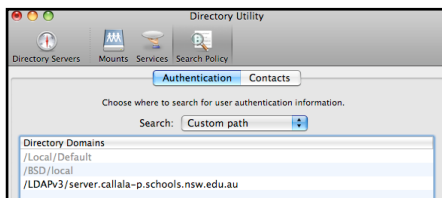


8. You will see your server's name displayed.



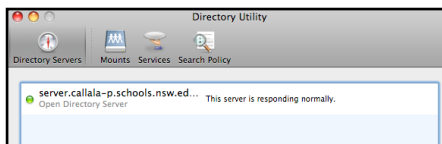
Select the server name, and click the **Add** button.

9. Your server will be added to the list.



Click on the **Apply** button.

10. You will be returned to the main *Directory Utility* window, where you will be advised that the server is responding normally!



11. Quit *Directory Utility*.

12. Log out as the **Local Admin** user.

You should now be able to logon as a user on the server.

