

14. Win XP - Workgroup Setup

About the Document

This document is the **fourteenth** in a series of documents describing the process of installing and configuring a *Mac OS X 10.6 Server* in a school environment.

Other documents in this series are available at:
servernotes.wazmac.com

This document provides information about connecting *Windows* computers to a *Mac OS X Server*.

Background

Windows computers can connect to a *Mac OS X Server* in the same *WorkGroup*, in the same way that they would connect to another *Windows* computer in that *Workgroup*.

This is useful in a school using mostly Mac computers, which also has a small number of *Windows* computers on the network which require access to documents stored on the *Mac OS X Server*.

Another *QuickStart* document in this series describes how *Mac OS X Server* can be configured to be a *Domain Controller*, to provide a *Windows* client environment that more closely resembles a network with a *Windows* server.

Mac OS X computers can also be configured to logon to a *Windows* server, using the built-in *Active Directory plug-in*.

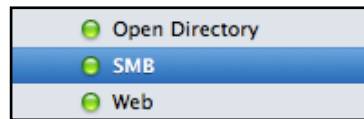
Note: This document assumes that you already have a functioning *Mac OS X Server*, configured as an *Open Directory Master*, on your network.

Other documents in this series

- Install & set up the *Mac OS X Server Software*
 - Initial software Installation and config.
- Configuring DNS
 - adjust the default setup, check zones, add machines.
- Setting up Services - 1
 - Services overview
- Setting up Services - 2
 - AFP, Web & SMB (Windows)
- Setting up Services - 3
 - DHCP
- Setting up Services - 4
 - Open Directory
- Setting up Sharepoints - 1
 - Groups folder
 - Home directories
- Setting up Users and Groups
- Setting up Sharepoints - 2
 - Imaging folder
 - Group folder permissions
- Client Imaging
 - Creating a master image
 - Creating a NetBoot image
 - Configuring NetBoot
 - Preparing the Server
 - Deploying a master image
- Managing Preferences
- Connecting OS X Clients to Open Directory
- ***Connecting from Windows XP - WorkGroup (This document)***
- Configuring *Mac OS X Server* as a *Primary Domain Controller* (PDC)
- Configuring your Intranet
- Blogs and Wikis
- Backing up your Server

1. Configuring the *Mac OS X Server* - Server Admin

- 1.1. Open *Server Admin* and select the **SMB** service.



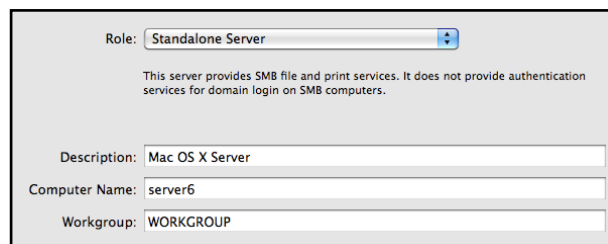
SMB (Server Message Block) is a protocol for sharing files, printers, etc, between (mainly *Windows*) computers. The implementation of SMB on *Unix* systems is known as *Samba*.

- 1.2. Click on the **Settings** icon at the top of the window.



- 1.3. If you know that the *Windows* computers on your network are in a specific *Workgroup*, enter the name of that *Workgroup* in the **Workgroup** field below.

If not, leave as the default *WORKGROUP* setting.



- 1.4. If necessary, **Save** the changed settings and click the **Stop SMB / Start SMB** button at the bottom of the window.



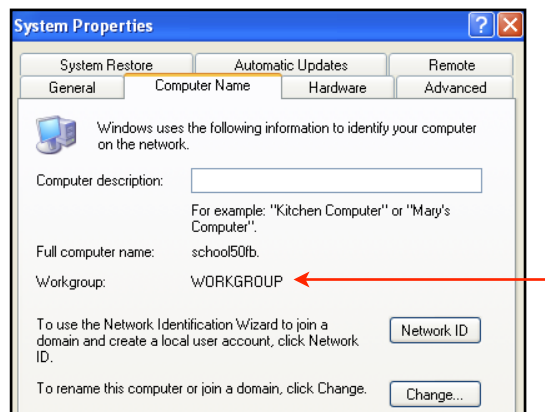
2. Setting up *Windows* clients

You will need to set the *Windows* computers (clients) on your network to join the **Workgroup** you created on the server.

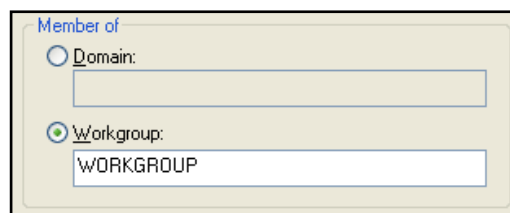
- 2.1. Working on a *Windows XP* computer, logged on as an *Administrator*, right-click on **My Computer**.

Choose **Properties**.

- 2.2. In the **System Properties** window, check that the computer is in the same **Workgroup** as the *Mac OS X Server*.



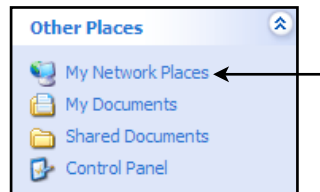
- 2.3. If necessary, click on the **Change** button to rename the *Workgroup*.



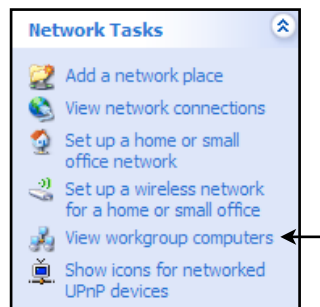
- 2.4. Close the **System Properties** window, applying any changes you have made. (You may need to restart the computer for the changes that you have made to take effect.)

2.5. Open **My Computer**.

2.6. Click on **My Network Places**.



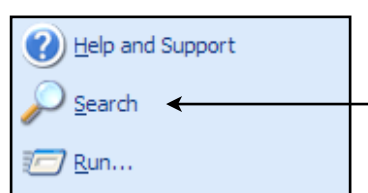
2.7. In the **Network Tasks** pane, click on **View Workgroup Computers**.



2.8. The *Mac OS X Server* may (or may not!) be displayed as a *Workgroup* computer.

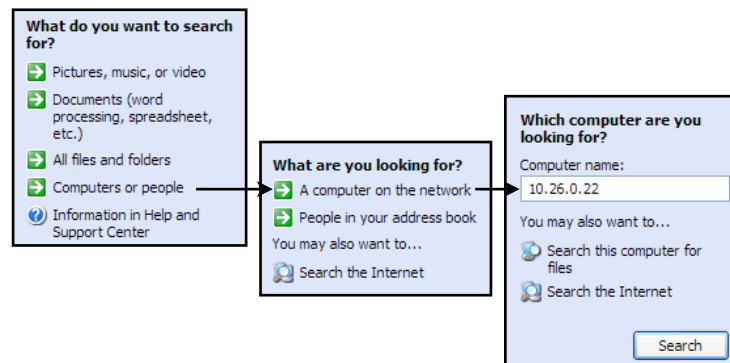


2.9. If the server is not displayed (or if login process won't accept your *Mac OS X Server* username and password) go to the **Start** menu, and click on **Search**.



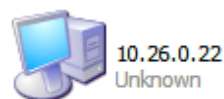
2.10. Follow the links to search for a **computer**.

Enter the **IP address** of your server.

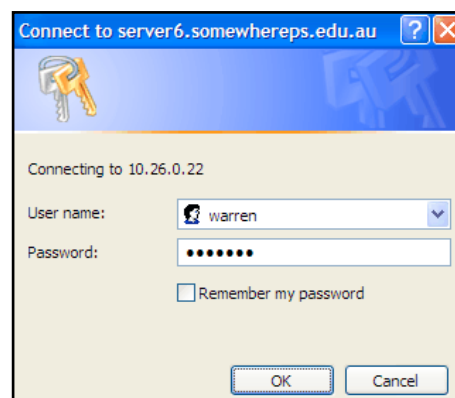


Click on the **Search** button.

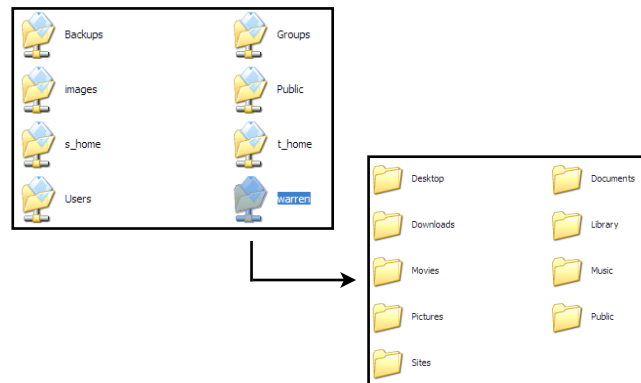
2.11. The *Mac OS X Server* will be displayed in the right-hand pane of the window.



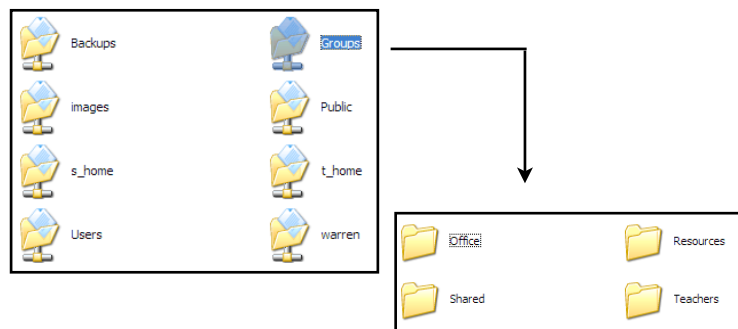
2.12. Enter your *Mac OS X Server* username and password.



- 2.13. You will see the shared folders on the server, including your **Home** folder, and all the contained sub-folders.



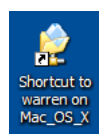
- 2.14. The shared folders in the **Groups** folder will also be accessible, subject to allocated user permissions.



- 2.15. You can then open, edit, and save documents stored on the *Mac OS X Server*.

The notes below explain some basics to be observed when sharing documents between *Win* and *Mac* computers.

- 2.16. To make reconnecting to the server a more simple operation, drag a shortcut from your *Mac OS X Home* folder and the Groups folder (or the individual sub-folders) to the *Windows* desktop.



3. File Compatibility between *Windows* and *Macintosh*

While this document describes how to connect a *Windows* workstation to a *Mac OS X Server*, there are some protocols to observe to facilitate the seamless sharing of documents between platforms.

Keep these basics in mind for sharing files with others, particularly between *Macintosh* and *Windows* computers:

3.1. Use a common application.

If you create a file in *Microsoft Office* on a *Mac*, for example, a person opening your file on a *Windows* computer must also have that application (or one that is compatible) installed on their computer to be able to open and read the file.

If you are sharing graphics files, use common “standard” formats, such as *tiff*, *gif*, *jpg*, *png*, etc. *Graphic Converter* is a useful *OSX* shareware application for converting graphics files to various formats.

3.2. Use the correct file extension.

Windows and *Mac* users have become familiar with *file extensions*, such as *.doc*, and *.xls*.

These extensions are used by the computer to identify which application should be used to open a file.

When saving a file to share with another person be sure to save the file with the correct *file extension*.

When saving a *Microsoft Word* document in *OSX*, for example, be sure to tick the **Append file extension** box.

