

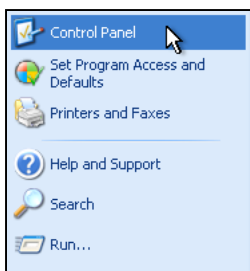
## Setting up a Web Server (IIS)

This document details the following four steps in setting up a Web Server (aka Internet Information Services -IIS) on Windows XP:

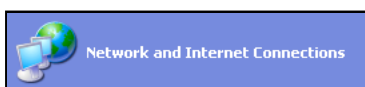
- Configuring the Internet Protocol (IP) on the Server.
- Installing IIS software.
- Testing your server software.
- Adding your own web content to the server.

# 1. Configuring the IP settings on your Web Server

## 1.1. Open **Control Panels**.



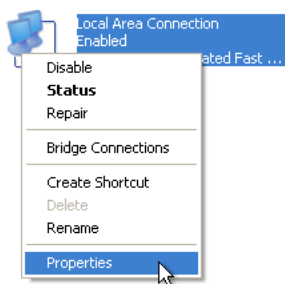
## 1.2. Click on **Network and Internet Connections**.



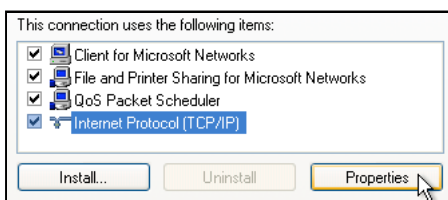
## 1.3. Click on **Network Connections**.



## 1.4. Right-click on your **Local Area Connection** icon, and choose **Properties**.

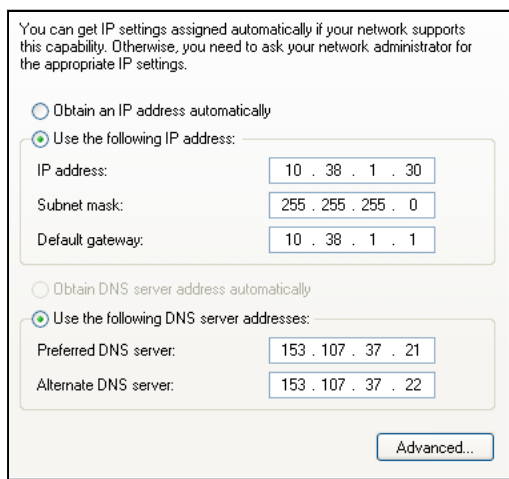


## 1.5. Select **Internet Protocol (TCP/IP)**.



Click on the **Properties** button.

- 1.6. Click to **Use the following IP address**, and enter an IP address and DNS address compatible with your network.



You can get IP settings assigned automatically if your network supports this capability. Otherwise, you need to ask your network administrator for the appropriate IP settings.

Obtain an IP address automatically

Use the following IP address:

IP address: 10 . 38 . 1 . 30

Subnet mask: 255 . 255 . 255 . 0

Default gateway: 10 . 38 . 1 . 1

Obtain DNS server address automatically

Use the following DNS server addresses:

Preferred DNS server: 153 . 107 . 37 . 21

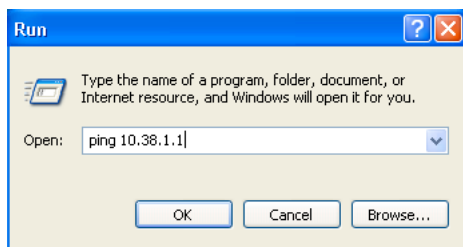
Alternate DNS server: 153 . 107 . 37 . 22

Advanced...

NSW DET schools should use 10.x.x.30 (or 28, or 29)

Click on **OK**.

- 1.7. You can check that the computer is connecting to the network by running a “ping” test to a known local IP address from **Run** in the **Start** menu.



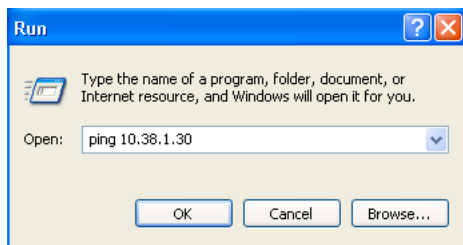
Run

Type the name of a program, folder, document, or Internet resource, and Windows will open it for you.

Open: ping 10.38.1.1

OK Cancel Browse...

- 1.8. You can also repeat the ping test from another network computer back to your web server’s IP address.



Run

Type the name of a program, folder, document, or Internet resource, and Windows will open it for you.

Open: ping 10.38.1.30

OK Cancel Browse...

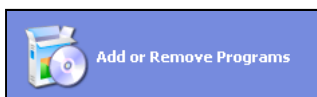
If you are unable to ping the server address, and your network is intact, check that the Firewall on the web server is not enabled to block incoming requests on Port 80 (Network connections > Properties > Advanced).

## 2. Installing the Web Server software on your computer

### 2.1. Open Control Panels.



### 2.2. Click on Add or Remove Programs.

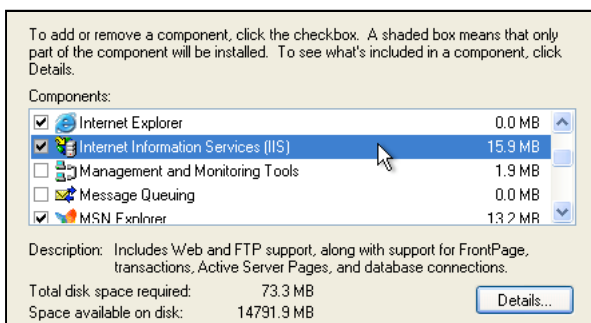


### 2.3. Click on Add/Remove Windows Components.



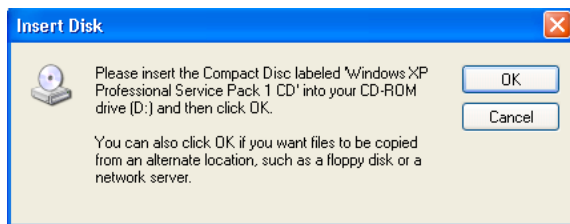
### 2.4. You will see the Windows Components Wizard.

Tick the box next to **Internet Information Services (IIS)**.

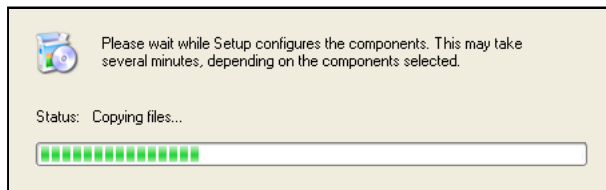


Click on the **Next** button.

2.5. You will be asked to insert your *Windows XP* installer disk.



2.6. The setup Wizard will copy and install the necessary files from the CD.



NOTE: If the *Windows XP* Installer screen appears (which auto-runs from the Installer CD), click on the **Exit** button.

2.7. After a few minutes you will be advised that the IIS components have been installed.



Click on the **Finish** button.

2.8. Close the **Add/Remove Software** window

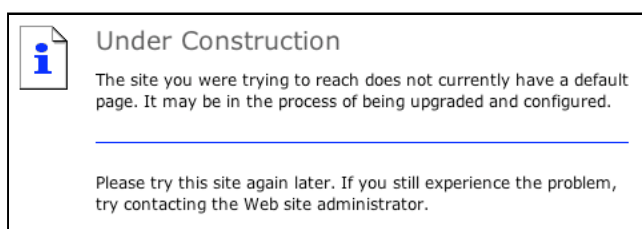
### 3. Checking that your Web Server is working

3.1. Move to another computer on the network.

3.2. Start a web browser

3.3. Enter the IP address of your Web Server.

You should see the following message:



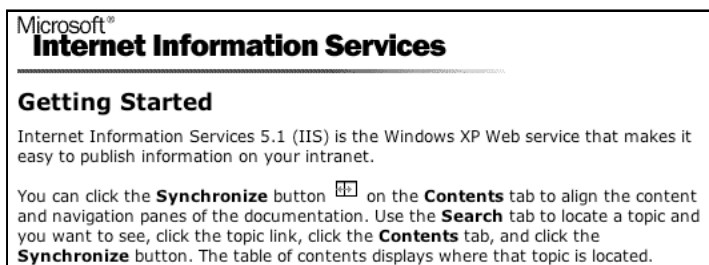
This indicates that your web server has recognised the request, and that it has returned a web page to the requesting browser.

Now we need to replace the **Under Construction** site with a site of our own.

#### 4. Setting up your own web site

This document is of an introductory nature only, and explains how to setup a basic intranet site using *Microsoft IIS*.

Once your IIS software is installed, a more comprehensive help guide is available at <http://your.server.address/iishelp> (eg <http://10.38.1.30/iishelp>)



You will also need to create some web page content to copy into your web site.

This document does not explain how to create web pages, but only how to setup and provide access to these pages from a IIS web server. The notes below assume that you have created some web pages, using MS Frontpage, Mozilla Composer, etc.

A template for a school Intranet web site is available at:  
<http://www.wazmac.com/wazza/intranet/>

- 4.1. The **Under Construction** page we saw previously was coming from a web site stored on your web server.

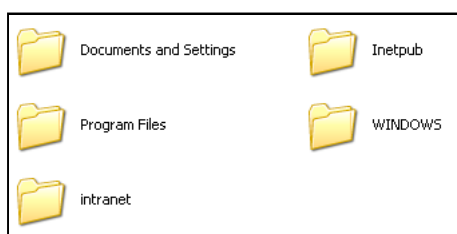
This site is stored in the following location:

C:\inetpub\wwwroot

- 4.2. Once you have created a new site, copy the site to the C: drive on your web server.

The folder containing the site must have an internet-savvy name (no spaces, etc)

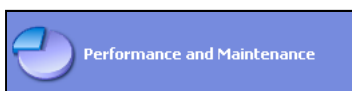
In the example below, we have downloaded the SomewherePS template, renamed the folder to **intranet**, and copied the folder to the C: drive:



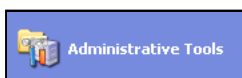
4.3. Open the **Control Panel** from the **Start** menu



4.4. Click on **Performance and Maintenance**.



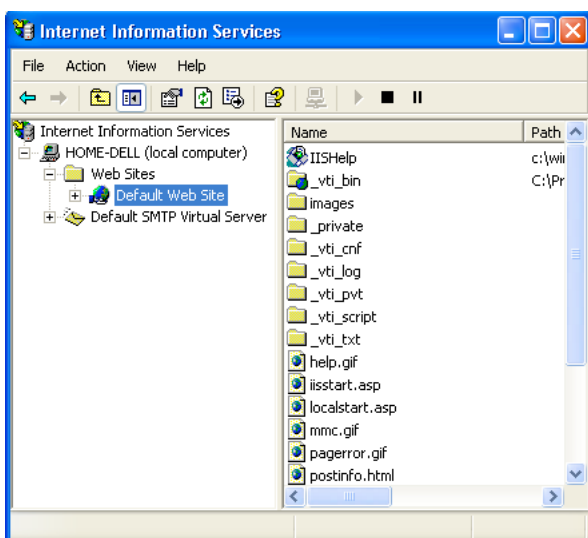
4.5. Click on **Administrative Tools**.



4.6. Click on **Internet Information Services**.

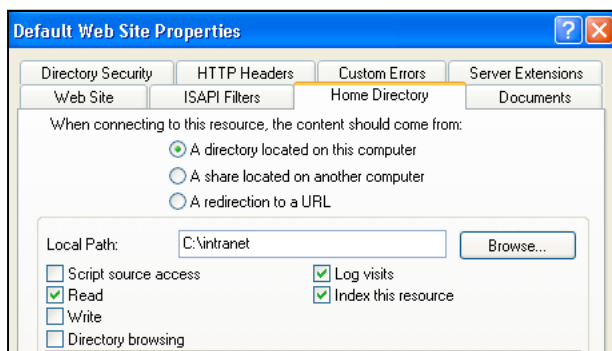


4.7. Expand the “tree” in the left column to display the **Default Web Site**.

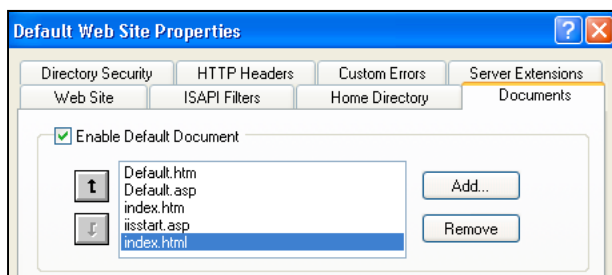


4.8. Right click on the **Default Web Site** and choose **Properties**.

4.9. Click on the **Home Directory** tab and specify the new location of the default web folder.



4.10. If your “default” web page, within the Intranet folder, has an “html” extension, click on the **Documents** tab.



Add **index.html** as a default document.

4.11. Click on the **Apply** button, and the **OK** button.

4.12. Move to a network computer. Open a browser and enter the IP address of the web server.

You will see your default web page!

